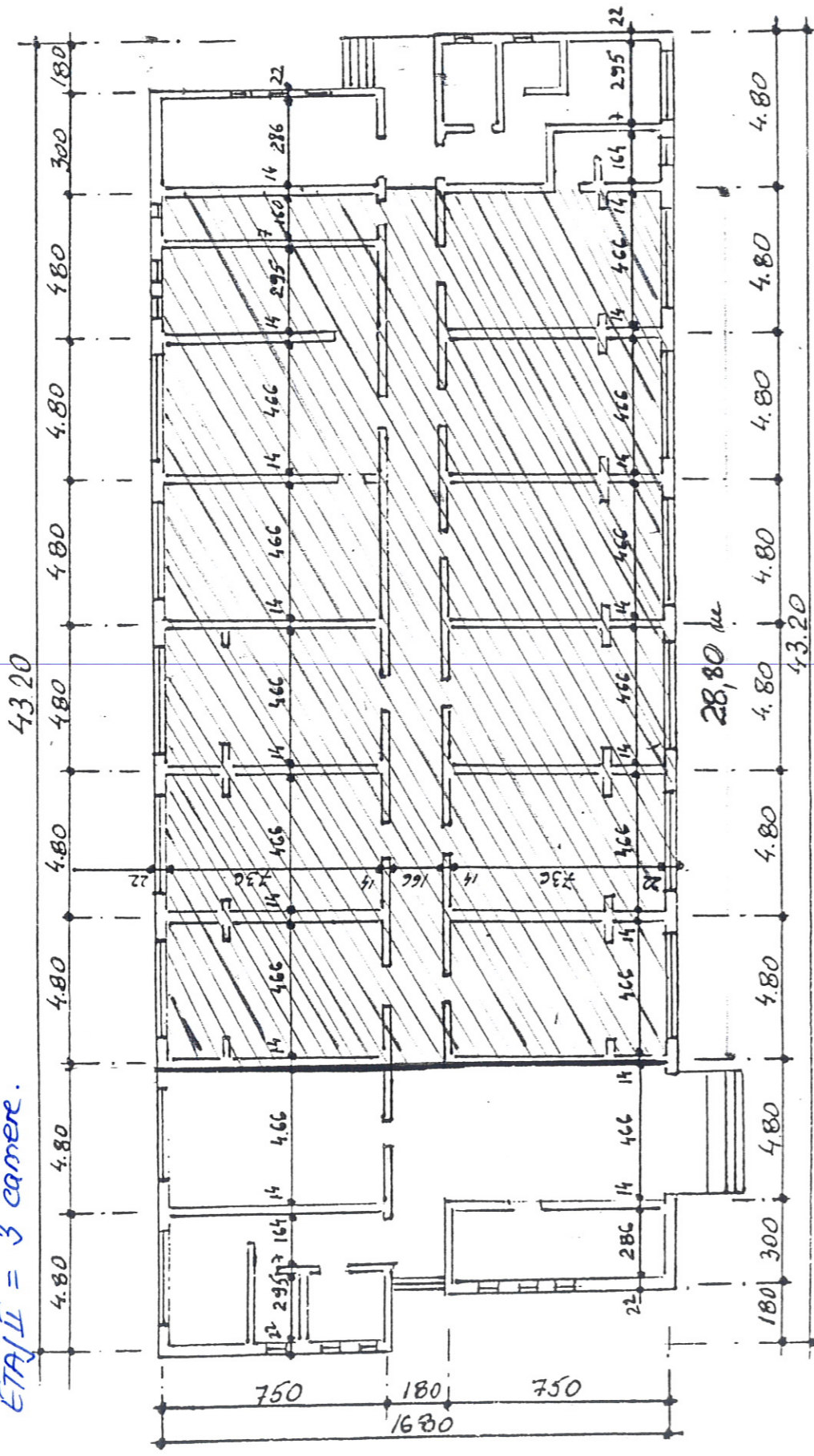


PLAN PARTER INTERNAT

COLEGIUL TEHNIC "FERINIANUS I" TIMIȘOARA;
 CAMIN NR. 2; STR. RENASTERII NR. 24/A

PARTER = 11 camere
 ETAJ I = 6 camere
 ETAJ II = 3 camere.



PARTER:

SCAMIN 2 (PARTER) = $\frac{483,81 \text{ mp}}{1183,81}$
 $28,80 + 16,80 =$

INCĂZERI:

- ① $4,66 \times 7,36 = 34,30 - 0,41 = 33,89 \text{ mp}$.
- ② $4,66 \times 7,36 = 34,30 \text{ mp}$.
- ③ $2,86 \times 7,36 = 21,05 \text{ mp}$.

TOTAL: $573,08 \text{ mp}$.

ETAJ I

- INCĂZERI:
- 1 = $33,89 \text{ mp}$
 - 2 = $34,30 \text{ mp}$
 - 3 = $34,30 \text{ mp}$
 - 4 = $34,30 \text{ mp}$
 - 5 = $47,67 \text{ mp}$
 - 6 = $21,84 \text{ mp}$

TOTAL = $206,30 \text{ mp}$.

ETAJ II:

- INCĂZERI:
- 1 = $33,89 \text{ mp}$
 - 2 = $34,30 \text{ mp}$

3 = $(4,66 \times 1,66) + (7,5 \times 4,66) + (2,86 \times 7,36) = 12,72 + 34,95 + 21,05 = 68,73 \text{ mp}$.

TOTAL = $68,73 \text{ mp}$.

ÎNTOCMIT,
 LUCIAN CIOBANU