

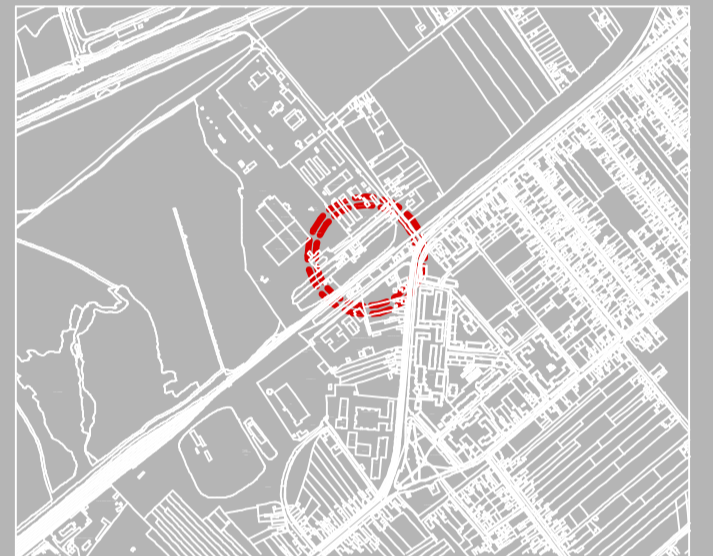
P.U.Z. CASE UNIFAMILIALE INSIRUITE P+1+M Str. Gruia Dumitru



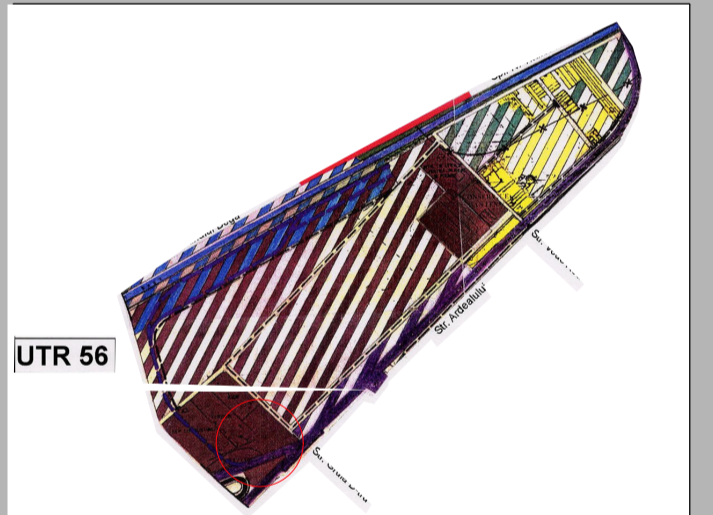
LEGENDA:

- limita zonei studiate
- limita de proprietate
- limita de proprietate pt. parcelele propuse
- limita protectie C.F.R.
- circulatie auto
- circulatie pietonala
- cale ferata
- transport in comun (tramvai)
- cladiri cu functiune rezidentiala (blocuri de locuinte P+4E)
- cladiri cu functiune rezidentiala (locuinte unifamiliale P/ P+1/ P+M)
- anexe gospodaresti P
- servicii (hale depozitare, hale productie)
- terenuri nedificate
- case unifamiliale insiruite in regim max. P+1E+M propuse
- zona verde propusa
- circulatii pietonale propuse
- circulatii auto propuse
- parcaje ecologice propuse

Plan de incadrare



EXTRAS DIN P.U.G. TIMISOARA



BILANT TERITORIAL:

Parcela Nr.	S. teren	POT max.	CUT max.
1	302.15mp	40%	1.2
2	250.95mp	40%	1.2
3	253.50mp	40%	1.2
4	256.00mp	40%	1.2
5	258.60mp	40%	1.2
6	261.40mp	40%	1.2
7	201.20mp	0%	0
8	266.40mp	40%	1.2
9	268.60mp	40%	1.2
10	270.40mp	40%	1.2
11	272.20mp	40%	1.2
12	274.00mp	40%	1.2
13	507.60mp	30%	1.2

Casa insiruite
 Regim de inaltime:
 P+1E+M
 H max. cornisa = 9m / C.T.S.
 H max. coama = 13.50m / C.T.S.
 POT max = 40%
 CUT max = 1.2

Verificator / expert	Nume	Semnatura	Cernita	Referat / Expertiza Nr. / Data
Atelierile ArhITECH S.C. Atelierile ArhITECH S.R.L. Timisoara, Aleea Icar nr.9 Reg. Com. J40/200404 C.U.I. R17025085 Tel. 0256/406023 E-mail: arhitech2005@yahoo.com				Beneficiar: S.C. COMPAGNIA INVESTIMENTI EUROPEA S.A. Amplasament: Str. Gruia Dumitru, Nr. 3, Timisoara
Titlu proiect: CASE UNIFAMILIALE INSIRUITE P+1+M - P.U.Z.				Proiect nr.: T1/GRU/07 Faza: P.U.Z.
Titlu plansa: PROPOUNERE DE MOBILARE URBANA				Plansa nr.: 05 - A

P.U.Z. CASE UNIFAMILIALE INSIRUITE P+1+M Str. Gruia Dumitru