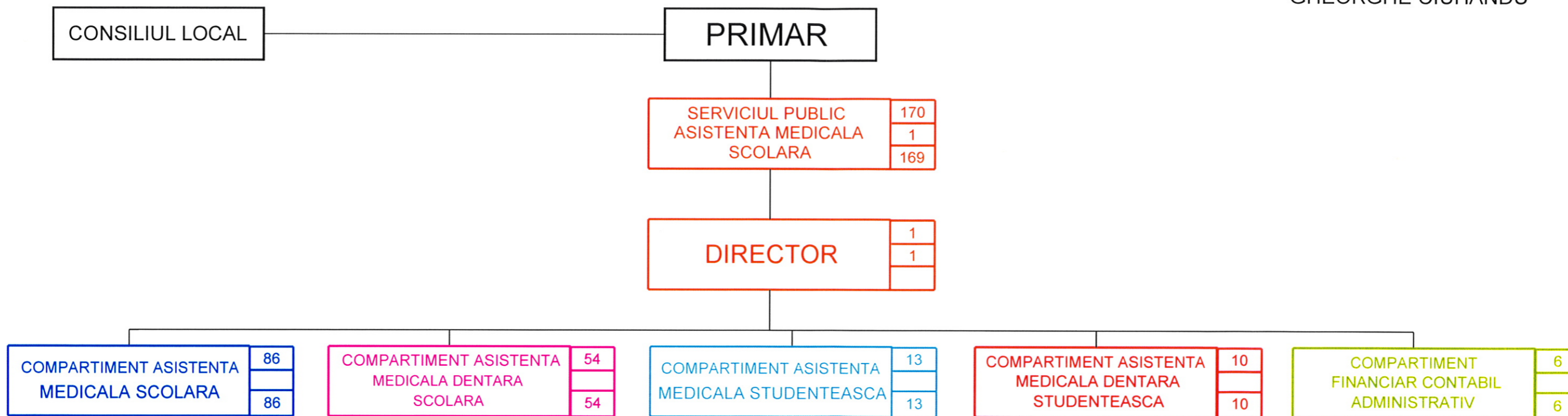


# ORGANIGRAMA SERVICIULUI PUBLIC ASISTENTA MEDICALA SCOLARA

ANEXA NR.1 LA HCL nr. \_\_\_\_\_

APROBAT  
PRIMAR  
GHEORGHE CIUHANDU



10 NOIEMBRIE 2009

TOTAL POSTURI DIN CARE	170
personal contractual de conducere	1
personal contractual de executie	169