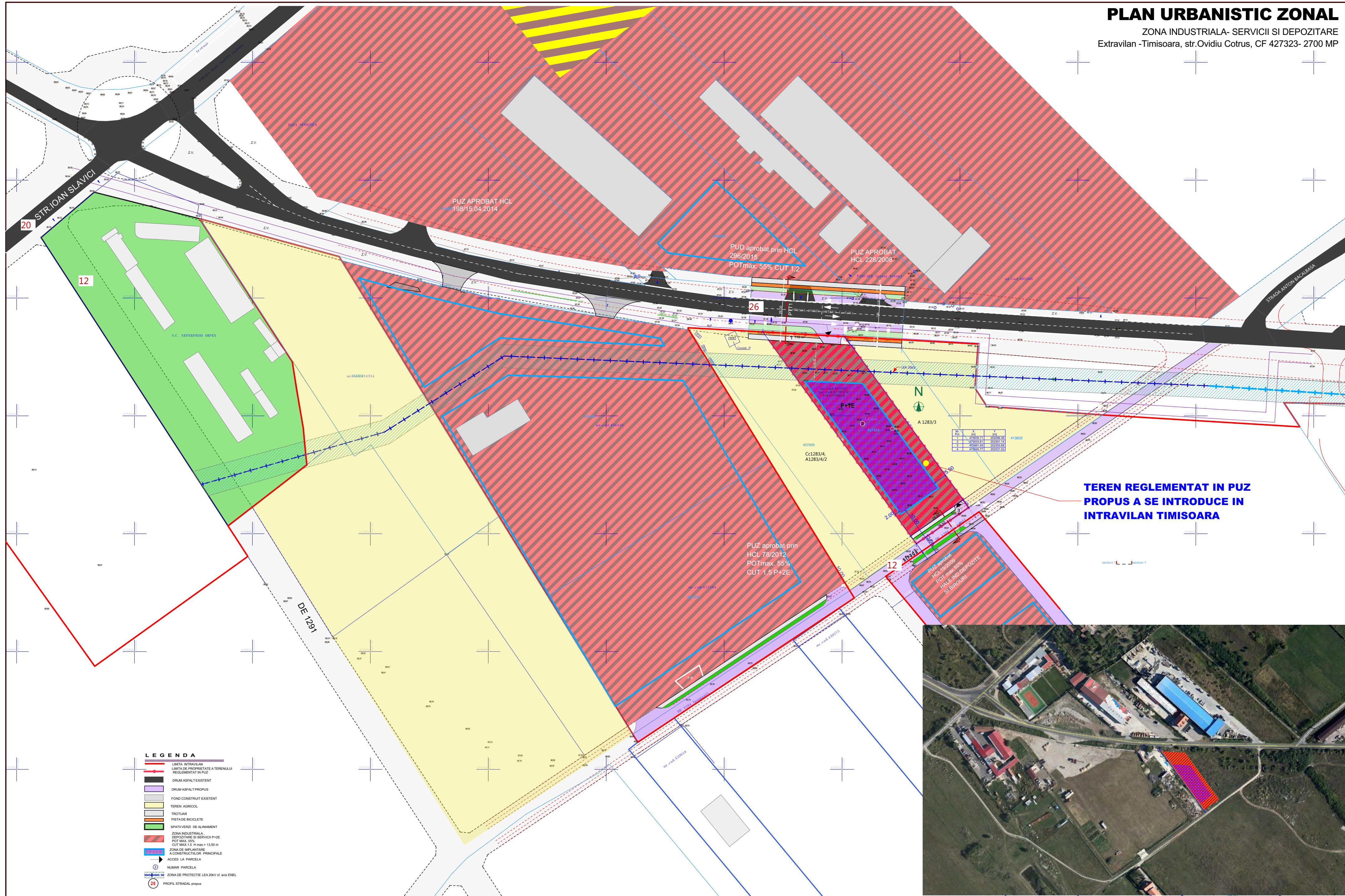
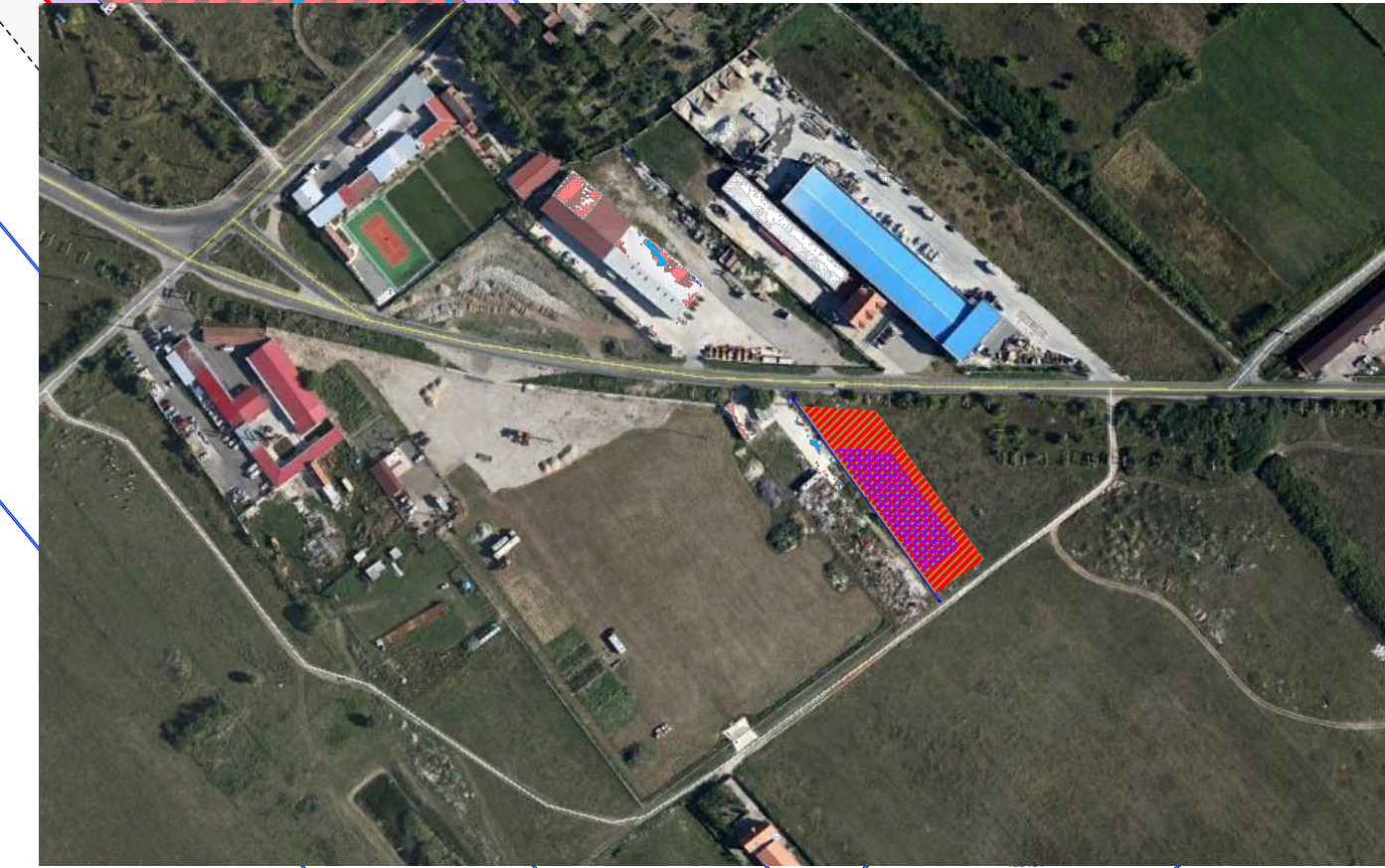


PLAN URBANISTIC ZONAL

ZONA INDUSTRIALA- SERVICII SI DEPOZITARE
 Extravilan - Timisoara, str.Ovidiu Cotrus, CF 427323- 2700 MP



- LEGENDA**
- LIMITA INTRAVILAN
 - LIMITA DE PROPRIETATE A TERENULUI REGLEMENTAT IN PUZ
 - DRUM ASFALT EXISTENT
 - DRUM ASFALT PROPUZ
 - FOND CONSTRUIT EXISTENT
 - TEREN AGRICOL
 - TROTUAR
 - PISTE DE BICICLETE
 - SPATI VERZI DE ALINAMENT
 - ZONA INDUSTRIALA, DEPOZITARE SI SERVICII P+2E POT MAX. 55% CUT MAX. 1,5 H max = 13,50 m
 - ZONA DE IMPLANTARE A CONSTRUCTIILOR PRINCIPALE
 - ACCES LA PARCELA
 - ② NUMAR PARCELA
 - ZONA DE PROTECTIE LEA ZONV cf. art.4 ENEL
 - ② PROFIL STRADAL propus



TECTONICS art S.R.L. <small>www.tectonics-art.ro E-mail: arhitectur@tectonics-art.ro RO-300576 Timisoara, Str. Scutur de la Tisa nr 10-12, et. A, ap. 1 Tel. Fax: +40369 501469, 50146921, 0758 959219</small>		arhitectura design urbanism	PROIECT: P.U.Z. ZONA INDUSTRIALA SERVICII SI DEPOZITARE NR. PROIECT 468/2016
SEF PROIECT arh. Carmen NICORICI-CALANCE VERIFICAT arh. Marius NICORICI-CALANCE PROIECTAT arh. Carmen NICORICI-CALANCE DESENAT arh. Carmen NICORICI-CALANCE	SCARA DATA 08.2016	BENEFICIAR: EUROWINDOW S.R.L. AMPLASAMENT: Extravilan Timisoara, str.Ovidiu Cotrus, nr.cad. 427323 PLANSA: STUDIU URBANISTIC CVARTAL	FAZA PUZ NR.PLANSA U 06/468