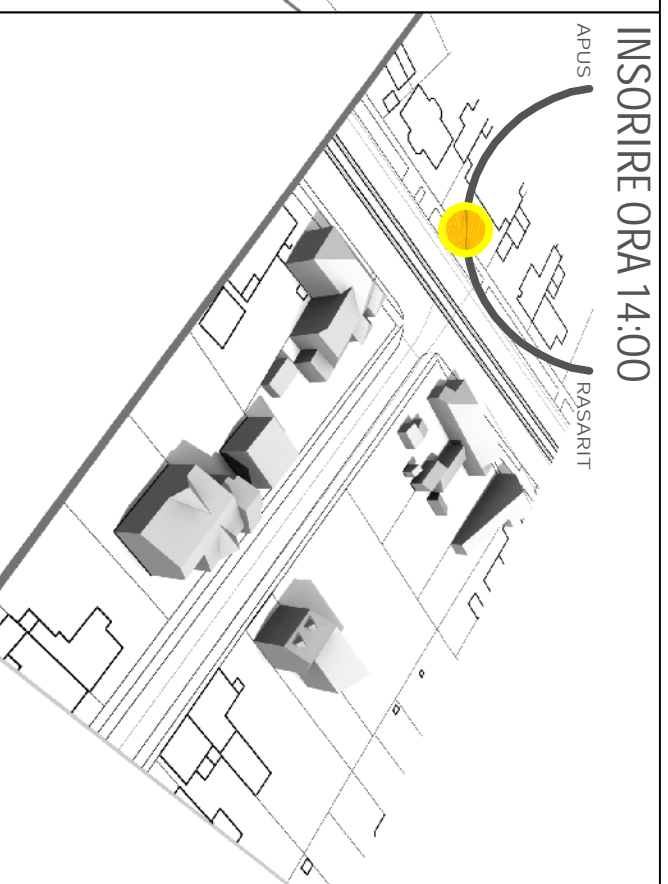
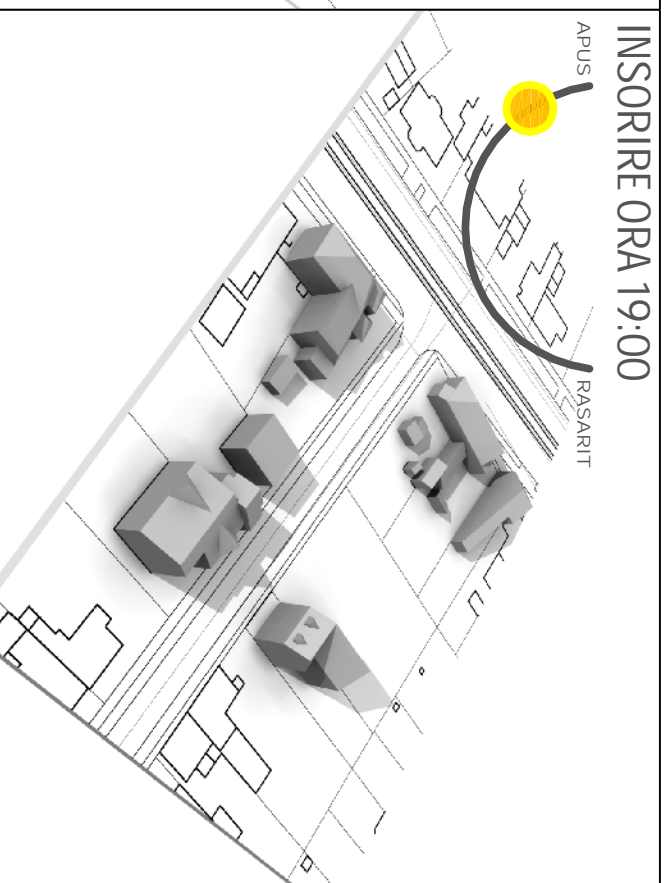


INSORIRE ORA 9:00

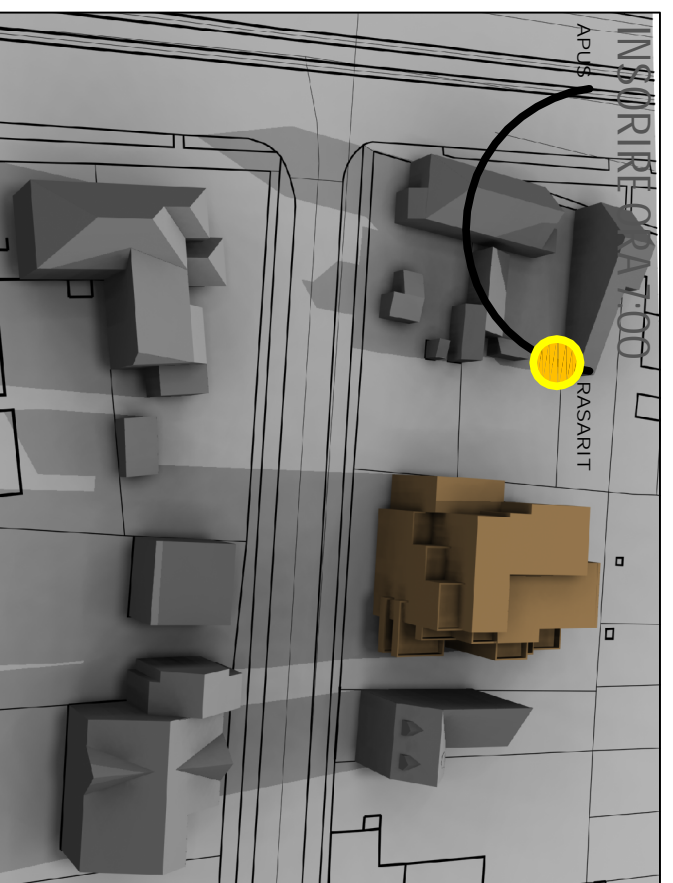


INSORIRE ORA 14:00

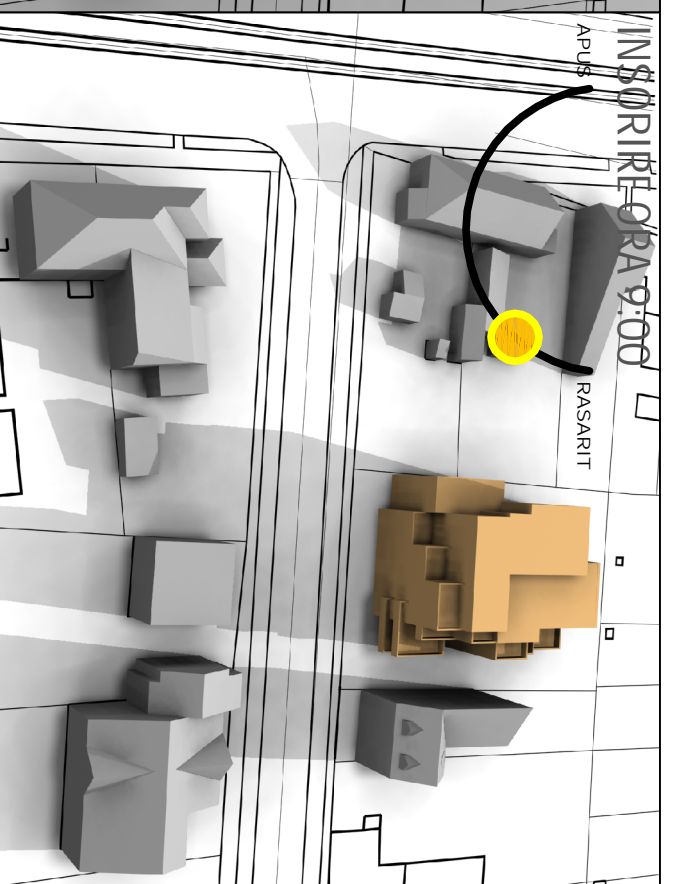


INSORIRE ORA 19:00

EXISTENT



INSORIRE ORA 9:00



INSORIRE ORA 14:00



INSORIRE ORA 19:00



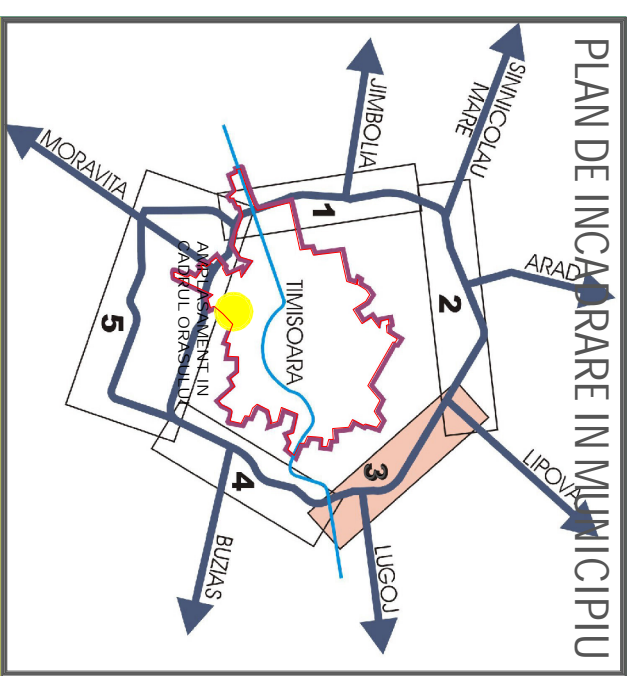
INSORIRE ORA 9:00



INSORIRE ORA 14:00



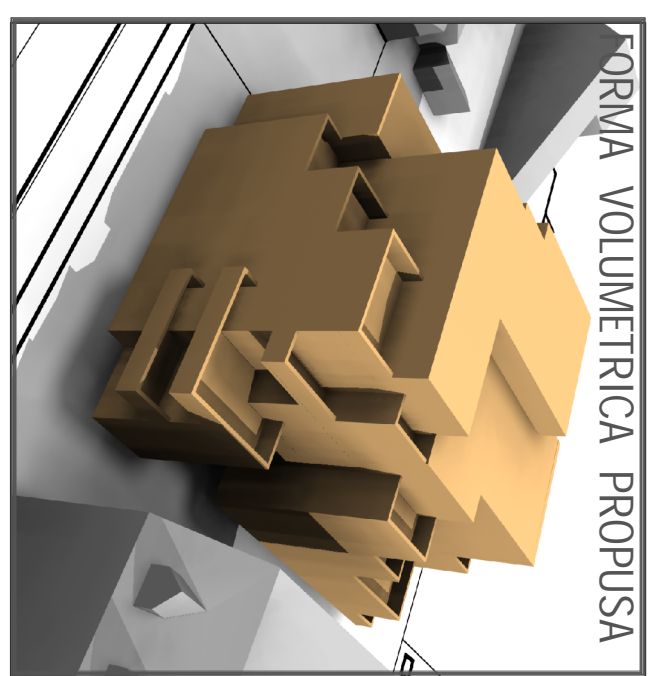
INSORIRE ORA 19:00



PLAN DE INCADRARE IN MUNICIPIU



PLAN DE SITUATIE EXISTENT

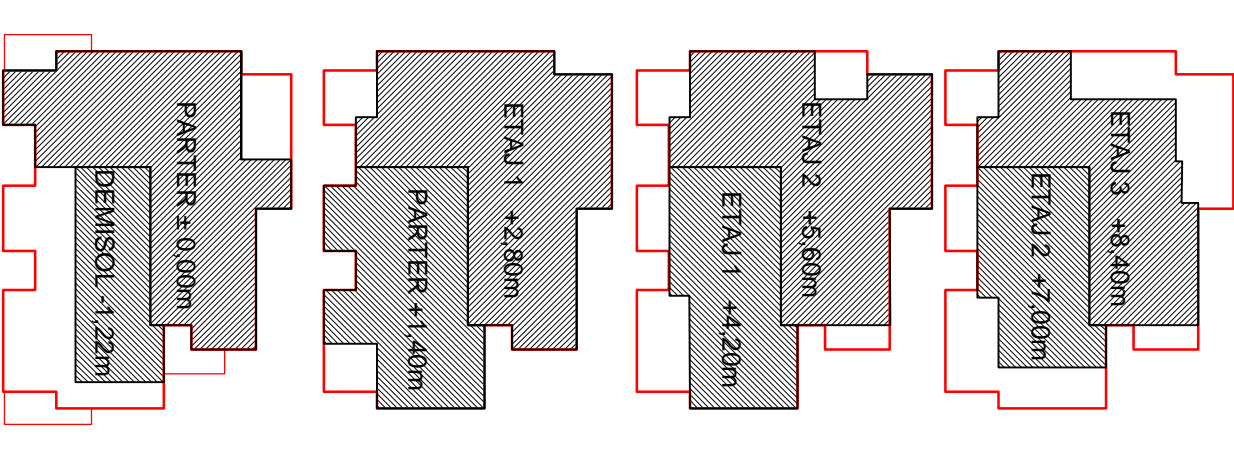


FORMA VOLUMETRICĂ PROPUȘĂ

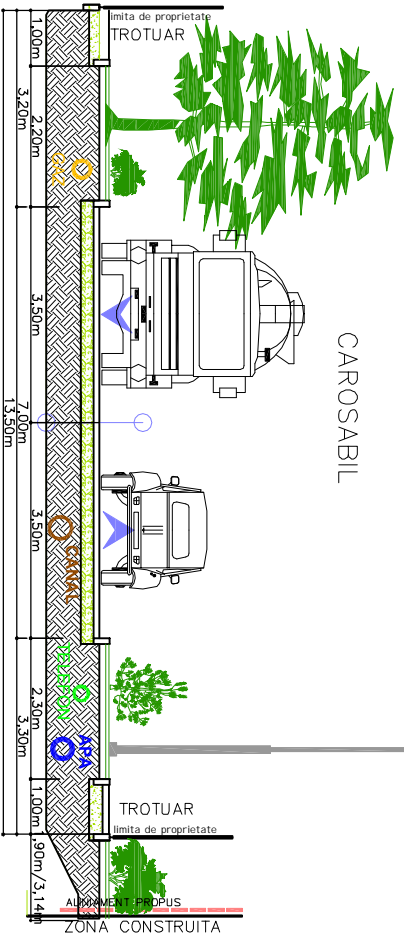
PLAN URBANISTIC DE DETALIU
IMOBIL CU 21 APARTAMENTE IN REGIM DE INALTIME
D+P+3ETAJE RETRASE SI PARTIAL P+4E RETRASE
str. LETEA, nr.1-3



PLANE DE INCADRARE IN ZONA



COTE DE NIVEL



PROFIL TRANSVERSAL PROPUS :13.60 m
 Strada LETEA

		STUDIO UNU s.r.l. s.c. Pata Avenue Sever, nr.14A, Timisoara, tel.0722920759		Beneficiar S.C. VICTORIA FACILITY INVESTMENT S.R.L.		Proiect nr. 85/2008	
SPECIFICATIE SEF PROIECT PROIECTAT DESEMAT	NUME arh. Aldeia Sclau arh. Aldeia Sclau	SEMNANTURA 	SCARA GRAFICA	Titlu proiect PLAN URBANISTIC DE DETALIU str. LETEA, nr.1-3	Faza P.U.D.	Data IAN, 2008	Planșa nr. A06
STUDIUL DE INSORIRE				STUDIUL DE INSORIRE			