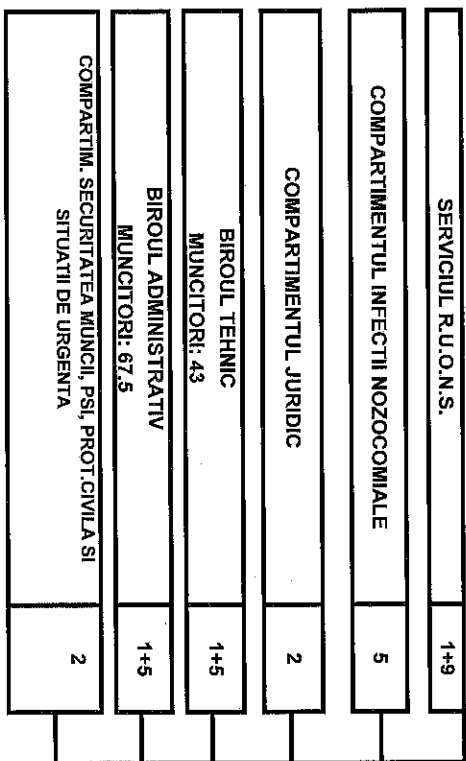


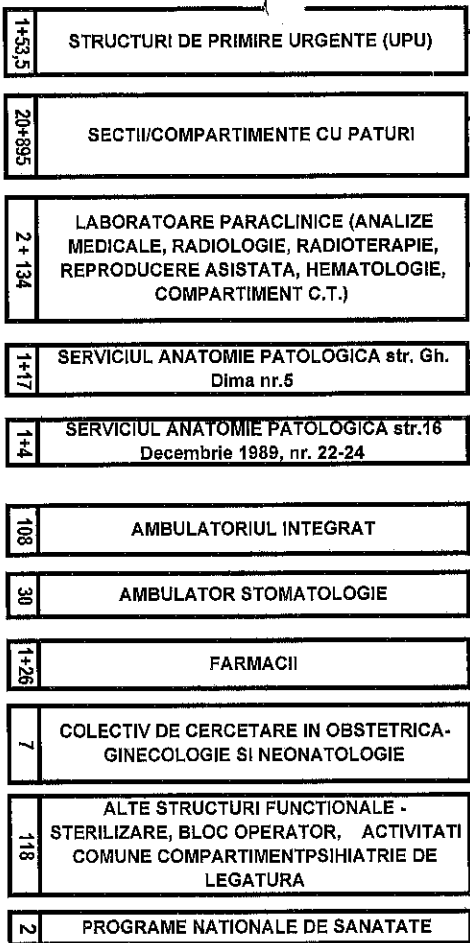
ORGANIGRAMA

APROBAT
 PRIMAR,
 NICOLAE ROBU

MANAGER



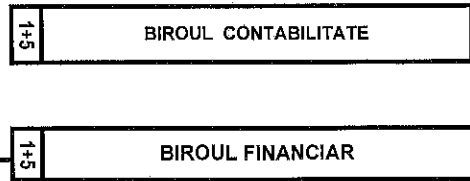
DIRECTOR MEDICAL



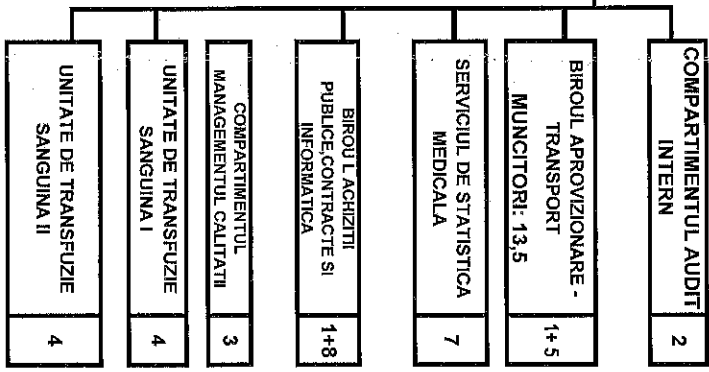
DIRECTOR DE INGRJIRI

Coordoneaza activitatea de ingrijiri la nivelul intregului spital si este responsabil cu colectarea deseurilor periculoase si menajere

DIRECTOR FINANCIAR



COMPARTIMENTUL C.F.P.



TOTAL PERSONAL: 2173,5
 TOTAL FUNCTII DE CONDUCERE: 37
 TOTAL FUNCTII DE EXECUTIE : 1589,5
 MEDICI REZIDENTI: 531
 FARMACISTI REZIDENTI : 16