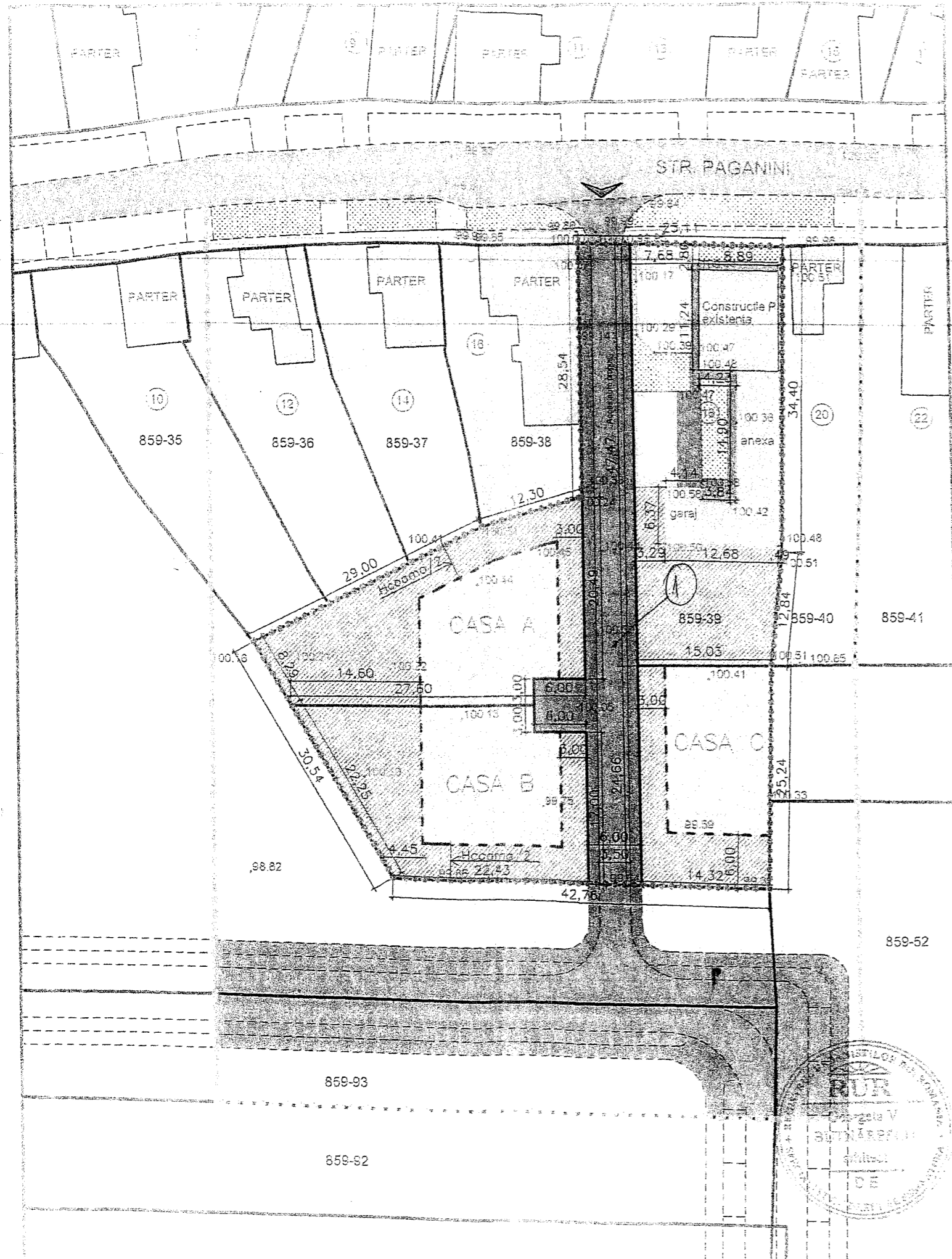


① ZONA IOAN SLAVIC - BACALBASA ①



LEGENDA

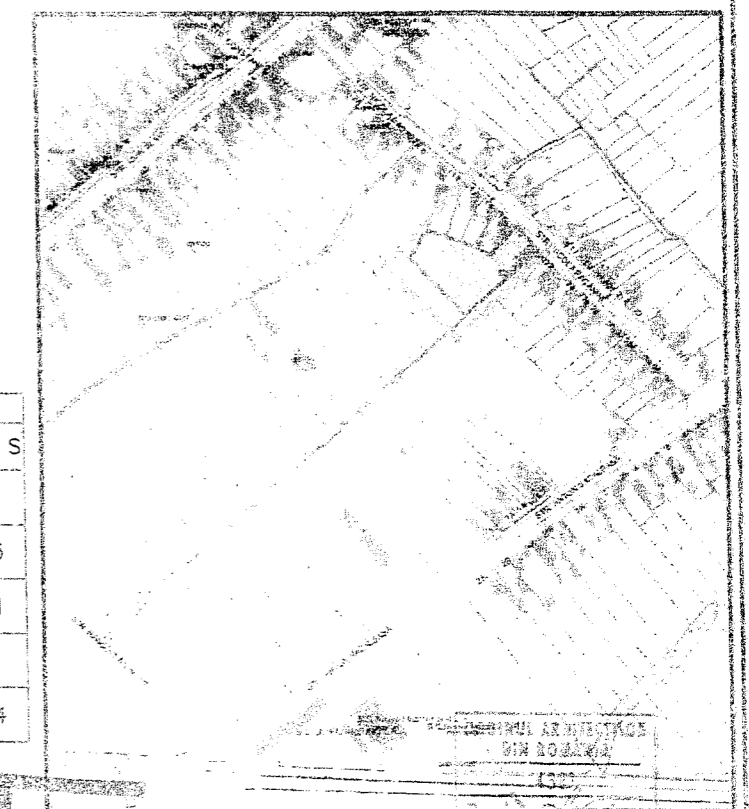
- Limite P.U.D.
- Limite zonei studiate
- Zona de implantare pentru constructiile propuse P+M
- Zona de locuit existenta
- Constructii existente
- Anexe existente
- Zona pietonala existenta
- Zona pietonala propusa
- Zona pietonala in afara parcelei
- Zona circulatie auto propusa
- Zona spatiu verde propus
- Zona spatiu verde existent
- ◀ Acces auto propus
- Drum asfaltat existent
- Plantatii de aliniament propuse



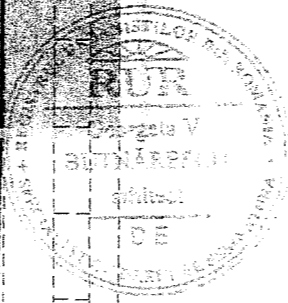
CF 401336-Timisoara
 Nr. top 289/a; 288/a/1; 288/a/2/b/1; 288/a/2/b/2
 S teren = 2676 mp
 P.O.T. propus = maxim 40 %
 C.U.T. propus = 1,2

BILANT TERITORIAL

SUPRAFATA TEREN	EXISTENT		PROPUS	
	S (mp)	% DIN S	S (mp)	% DIN S
TOTAL ZONA P.U.D.	2676	100	2676	100
ZONA CONSTRUCTII	235,48	8,80	825,50	30,85
ZONA SPATIU VERDE	316,16	11,81	1076,02	40,21
GRADINA	1968,14	73,55	X	X
CIRCULATII AUTO SI PIETONALE	156,22	5,84	774,48	28,94



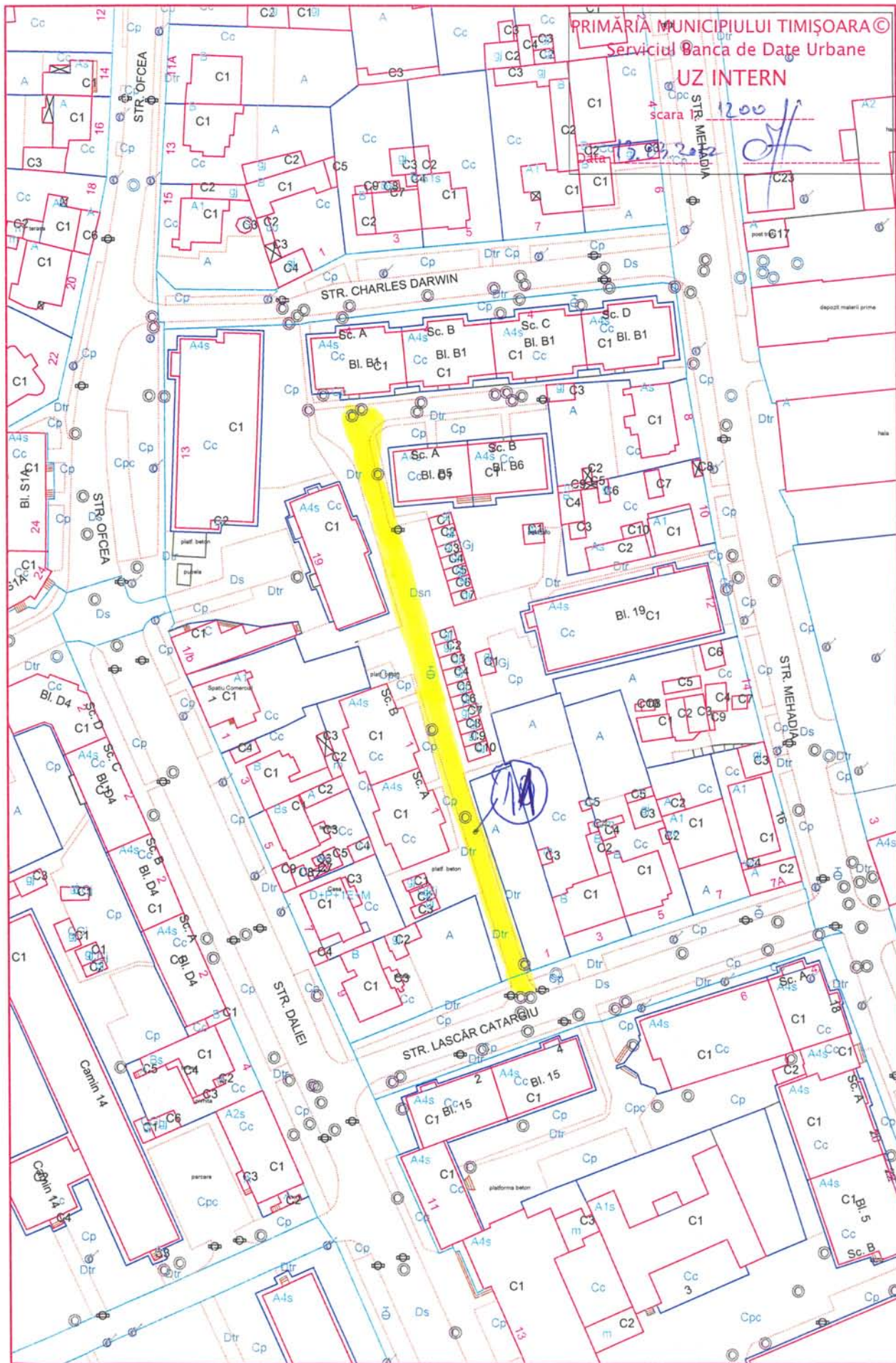
PLAN INCADRARE IN ZONA 1:5000



	s.c. ARHLAND s.r.l. Reg. Com. J46/9552/2004 CUI: RO 16302501 Timisoara, str. Ion Gheica nr. 7 ap. 3 tel/fax: 0256.201.433 www.arhland.ro		
SPECIFICATIE PROIECTAT REZENAT	NUME arh. G. Butnărescu arh. Octavian R. Topai ing. Claudiu Draghici	SEMNATURA [Signatures]	SCALA 1:500 DATA 22.12.2008

Beneficiar	COCIORVAN IOAN	Proiect nr.	66/2008
Titlu proiect	CONSTRUIRE TREI CASE IN REGIM D+P+2E DUPA ELABORARE SI APROBARE PUD Timisoara, str. Paganini nr. 13	Faza	P.U.D.
Titlu planșă	PLAN DE SITUATIE PROPUS REGLEMENTARI URBANISTICE	Planșă nr.	A02

11 ZONA COMPLEX STUDENȚESC



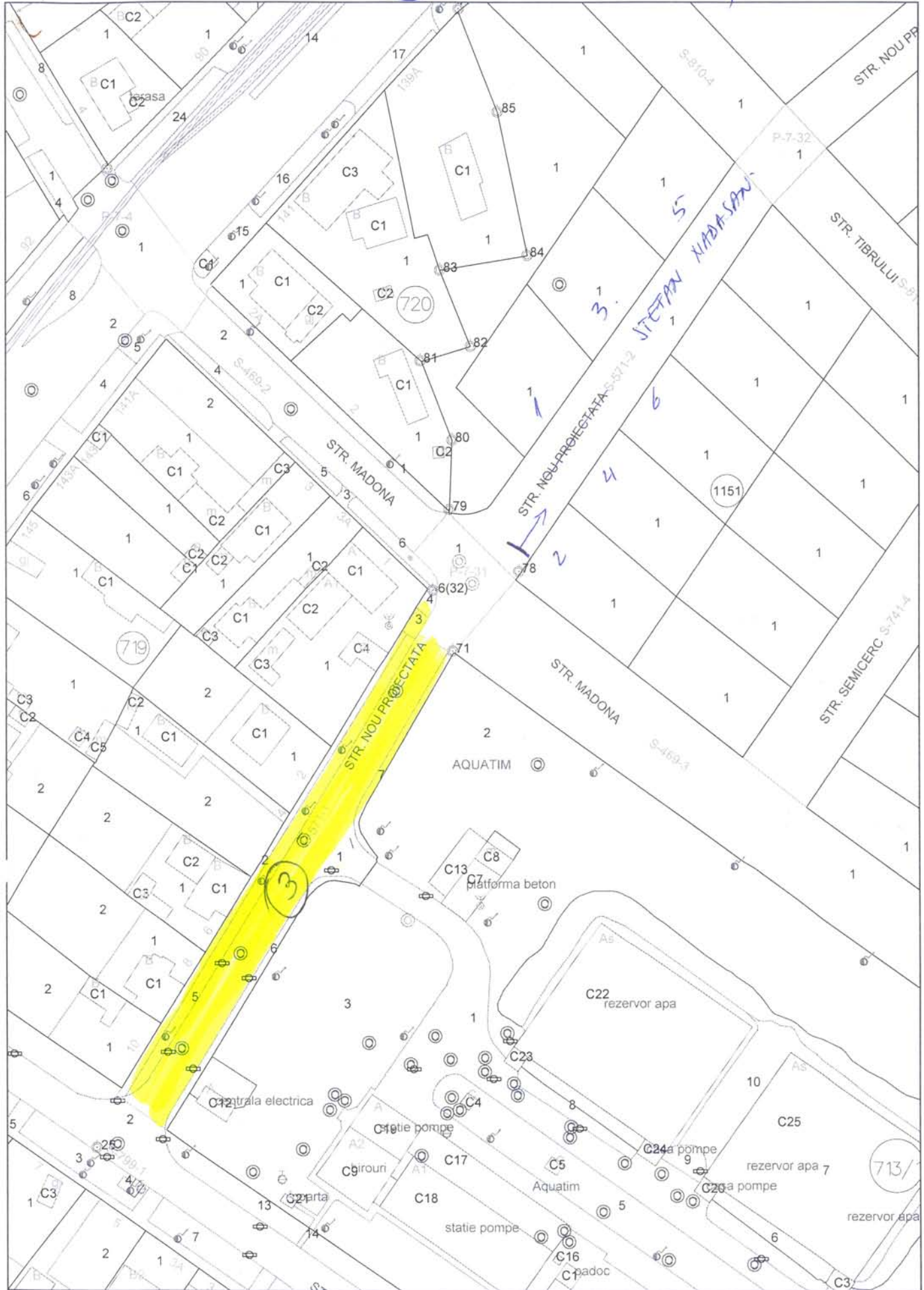
12 ZONA C. BUZIAȘULUI - RECOLTEI

PRIMĂRIA MUNICIPIULUI TIMIȘOARA ©
Serviciul Banca de Date Urbane
UZ INTERN
scara 1:
Data 12.02.2012



3 ZONA RONAT

3



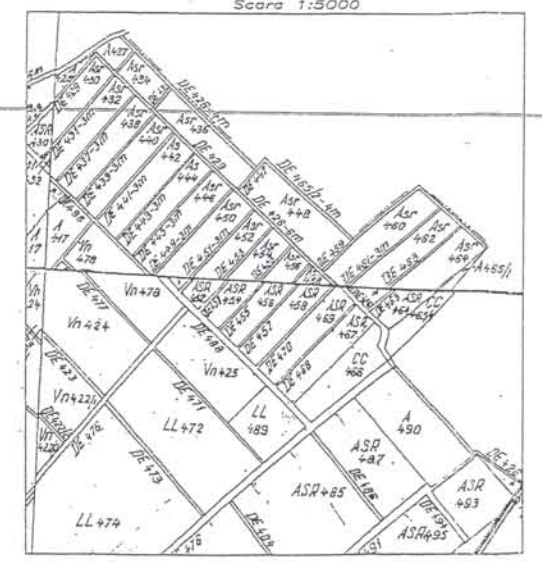
de Tristan Tzara

PLAN DE AMPLASAMENT SI DELIMITARE A IMOBILULUI CU PROPUNEREA DE DEZLIPIRE
Scara 1: 1000

Nr. cadastral	Suprafata masurata	Adresa imobilului
Cc464/1	41831 mp	Mun. Timisoara - Jud. Timis
Cartea Funciara nr.	141286	DAE TIMISOARA



PLAN DE INCADRARE IN ZONA
Mun. Timisoara - Jud. Timis
Scara 1:5000



TABEL DE MISCARE PARCELARA PENTRU DEZLIPIRE

SITUATIA ACTUALA (inainte de dezlipire)				SITUATIA PROPUISA (dupa dezlipire)			
Nr.cad.	Suprafata (mp)	Categoria de folosinta	Descrierea imobilului	Nr.cad.	Suprafata (mp)	Categoria de folosinta	Descrierea imobilului
Cc464/1/1	1194	Curti constructi	Curti constructi intravilan extins	Cc464/1/1	1194	Curti constructi	Curti constructi intravilan extins
Cc464/1/2	622	Curti constructi	Curti constructi intravilan extins	Cc464/1/2	622	Curti constructi	Curti constructi intravilan extins
Cc464/1/3	622	Curti constructi	Curti constructi intravilan extins	Cc464/1/3	622	Curti constructi	Curti constructi intravilan extins
Cc464/1/4	622	Curti constructi	Curti constructi intravilan extins	Cc464/1/4	622	Curti constructi	Curti constructi intravilan extins
Cc464/1/5	623	Curti constructi	Curti constructi intravilan extins	Cc464/1/5	623	Curti constructi	Curti constructi intravilan extins
Cc464/1/6	952	Curti constructi	Curti constructi intravilan extins	Cc464/1/6	952	Curti constructi	Curti constructi intravilan extins
Cc464/1/7	600	Curti constructi	Curti constructi intravilan extins	Cc464/1/7	600	Curti constructi	Curti constructi intravilan extins
Cc464/1/8	600	Curti constructi	Curti constructi intravilan extins	Cc464/1/8	600	Curti constructi	Curti constructi intravilan extins
Cc464/1/9	632	Curti constructi	Curti constructi intravilan extins	Cc464/1/9	632	Curti constructi	Curti constructi intravilan extins
Cc464/1/10	804	Curti constructi	Curti constructi intravilan extins	Cc464/1/10	804	Curti constructi	Curti constructi intravilan extins
Cc464/1/11	624	Curti constructi	Curti constructi intravilan extins	Cc464/1/11	624	Curti constructi	Curti constructi intravilan extins
Cc464/1/12	625	Curti constructi	Curti constructi intravilan extins	Cc464/1/12	625	Curti constructi	Curti constructi intravilan extins
Cc464/1/13	764	Curti constructi	Curti constructi intravilan extins	Cc464/1/13	764	Curti constructi	Curti constructi intravilan extins
Cc464/1/14	643	Curti constructi	Curti constructi intravilan extins	Cc464/1/14	643	Curti constructi	Curti constructi intravilan extins
Cc464/1/15	673	Curti constructi	Curti constructi intravilan extins	Cc464/1/15	673	Curti constructi	Curti constructi intravilan extins
Cc464/1/16	685	Curti constructi	Curti constructi intravilan extins	Cc464/1/16	685	Curti constructi	Curti constructi intravilan extins
Cc464/1/17	657	Curti constructi	Curti constructi intravilan extins	Cc464/1/17	657	Curti constructi	Curti constructi intravilan extins
Cc464/1/18	847	Curti constructi	Curti constructi intravilan extins	Cc464/1/18	847	Curti constructi	Curti constructi intravilan extins
Cc464/1/19	3092	Curti constructi	Curti constructi intravilan extins	Cc464/1/19	3092	Curti constructi	Curti constructi intravilan extins
Cc464/1/20	1228	Curti constructi	Curti constructi intravilan extins	Cc464/1/20	1228	Curti constructi	Curti constructi intravilan extins
Cc464/1/21	320	Curti constructi	Curti constructi intravilan extins	Cc464/1/21	320	Curti constructi	Curti constructi intravilan extins
Cc464/1/22	308	Curti constructi	Curti constructi intravilan extins	Cc464/1/22	308	Curti constructi	Curti constructi intravilan extins
Cc464/1/23	958	Curti constructi	Curti constructi intravilan extins	Cc464/1/23	958	Curti constructi	Curti constructi intravilan extins
Cc464/1/24	951	Curti constructi	Curti constructi intravilan extins	Cc464/1/24	951	Curti constructi	Curti constructi intravilan extins
Cc464/1/25	943	Curti constructi	Curti constructi intravilan extins	Cc464/1/25	943	Curti constructi	Curti constructi intravilan extins
Cc464/1/26	935	Curti constructi	Curti constructi intravilan extins	Cc464/1/26	935	Curti constructi	Curti constructi intravilan extins
Cc464/1/27	927	Curti constructi	Curti constructi intravilan extins	Cc464/1/27	927	Curti constructi	Curti constructi intravilan extins
Cc464/1/28	318	Curti constructi	Curti constructi intravilan extins	Cc464/1/28	318	Curti constructi	Curti constructi intravilan extins
Cc464/1/29	583	Curti constructi	Curti constructi intravilan extins	Cc464/1/29	583	Curti constructi	Curti constructi intravilan extins
Cc464/1/30	601	Curti constructi	Curti constructi intravilan extins	Cc464/1/30	601	Curti constructi	Curti constructi intravilan extins
Cc464/1/31	602	Curti constructi	Curti constructi intravilan extins	Cc464/1/31	602	Curti constructi	Curti constructi intravilan extins
Cc464/1/32	606	Curti constructi	Curti constructi intravilan extins	Cc464/1/32	606	Curti constructi	Curti constructi intravilan extins
Cc464/1/33	509	Curti constructi	Curti constructi intravilan extins	Cc464/1/33	509	Curti constructi	Curti constructi intravilan extins
Cc464/1/34	613	Curti constructi	Curti constructi intravilan extins	Cc464/1/34	613	Curti constructi	Curti constructi intravilan extins
Cc464/1/35	616	Curti constructi	Curti constructi intravilan extins	Cc464/1/35	616	Curti constructi	Curti constructi intravilan extins
Cc464/1/36	619	Curti constructi	Curti constructi intravilan extins	Cc464/1/36	619	Curti constructi	Curti constructi intravilan extins
Cc464/1/37	622	Curti constructi	Curti constructi intravilan extins	Cc464/1/37	622	Curti constructi	Curti constructi intravilan extins
Cc464/1/38	626	Curti constructi	Curti constructi intravilan extins	Cc464/1/38	626	Curti constructi	Curti constructi intravilan extins
Cc464/1/39	629	Curti constructi	Curti constructi intravilan extins	Cc464/1/39	629	Curti constructi	Curti constructi intravilan extins
Cc464/1/40	632	Curti constructi	Curti constructi intravilan extins	Cc464/1/40	632	Curti constructi	Curti constructi intravilan extins
Cc464/1/41	601	Curti constructi	Curti constructi intravilan extins	Cc464/1/41	601	Curti constructi	Curti constructi intravilan extins
Cc464/1/42	602	Curti constructi	Curti constructi intravilan extins	Cc464/1/42	602	Curti constructi	Curti constructi intravilan extins
Cc464/1/43	675	Curti constructi	Curti constructi intravilan extins	Cc464/1/43	675	Curti constructi	Curti constructi intravilan extins
Cc464/1/44	7330	Curti constructi	Curti constructi intravilan extins	Cc464/1/44	7330	Curti constructi	Curti constructi intravilan extins
Cc464/1/45	2266	Curti constructi	Curti constructi intravilan extins	Cc464/1/45	2266	Curti constructi	Curti constructi intravilan extins
Total	41800	-	-	Total	41800	-	-

Intocmit,
Ing. CAPRA CLAUDIA



S.C. MS - CAD S.R.L.
29.05.2007



Verificat,
Ing. SUTEU MARIA



Receptionat,

Oficiu de Cadastru si Publicitate Imobiliară Timis
SAZOSAN CORNELIA
CONSILIER I N. 25004 / 08



5 ZONA ARADULUI - LIEGE

top 23208

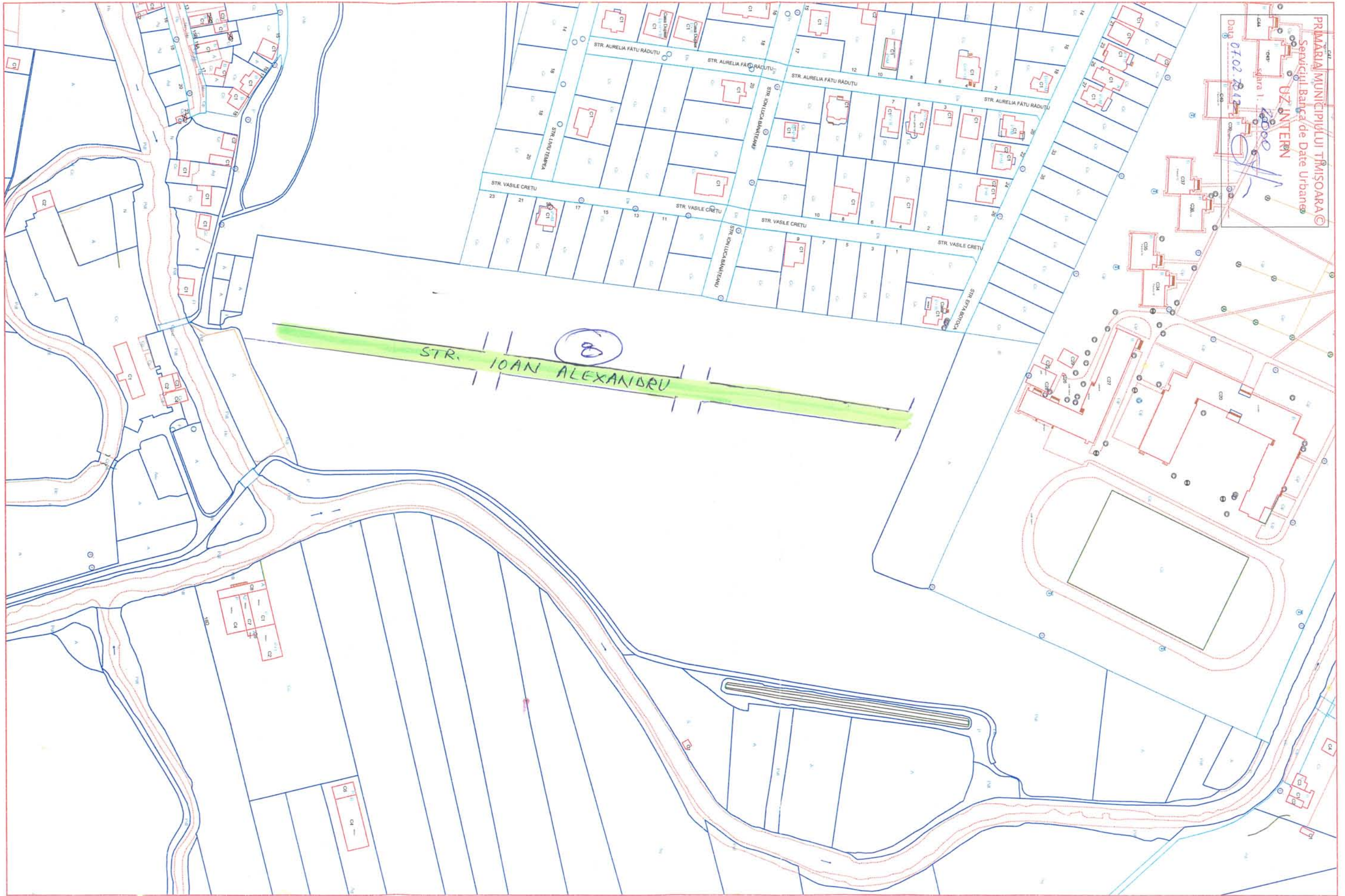
29787/1

Str. Liege

Str. Linistei

STR PROFESOR DE VALERIU ALAI

8 ZONA CÂMPULUI - EFTA BOTOÇA



9 ZONA I DECEMBRIE - FOȘTA PIAȚĂ BIHOR

PRIMĂRIA MUNICIPIULUI TIMIȘOARA
Serviciul Banca de Date Urbane
UZ INTERN
scara 1: 1000
Data 03.2.2022

