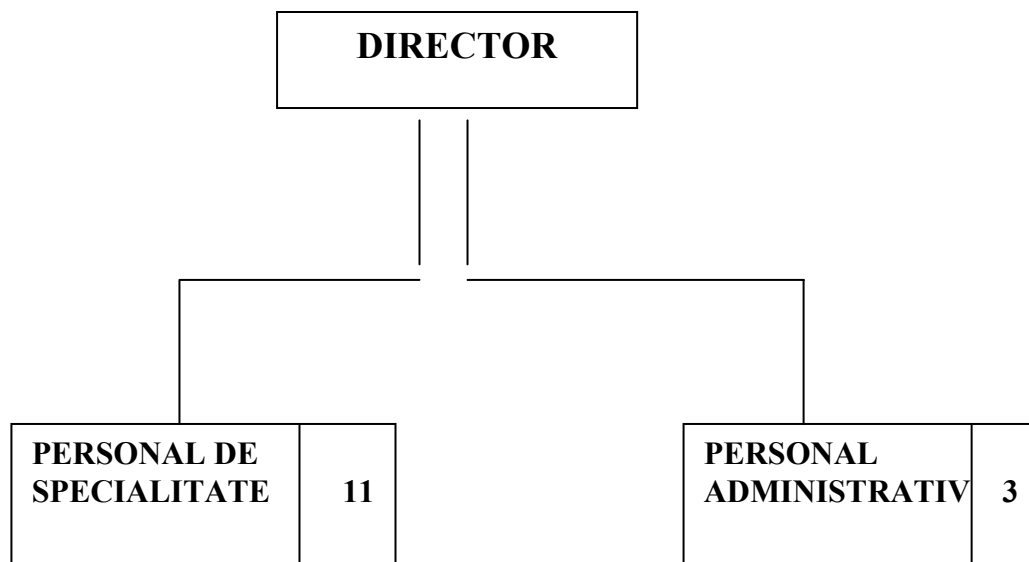


ANEXA 1 -A

ORGANIGRAMA ASOCIATIEI „CASA FAENZA”



DIRECTOR

- 1 asistent social

Personal:
- de specialitate

- 6 instructori de ergoterapie (pedagogi de recuperare)
- **2 psihologi (1supervizor de specialitate echipa; 1 coordonator servicii adolescenti autisti)**
- 1 medic neuropsihiatru (1/2 norma)
- 1 kinetoterapeut (1/2 norma)
- 1 asistent social

- auxiliar

- 1secretar/contabil
- 1 infirmier
- 1 sofer/administrator/casier

1 sofer/administrator/casier

TOTAL PERSONAL: 1 + 14 = 15