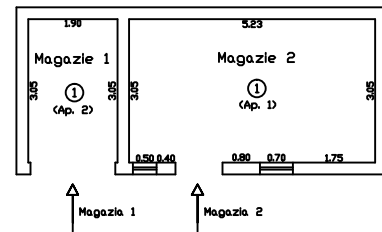


## RELEVU IMOBIL

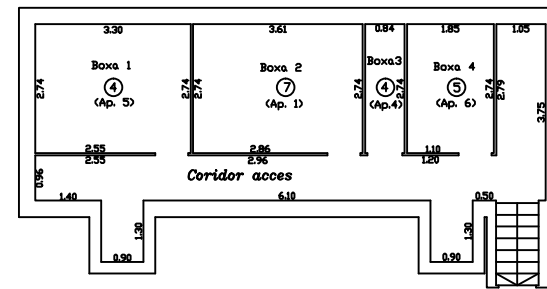
(dupa de apartamentare)  
Scara 1:100

Nr. top teren	Suprafata	Adresa imobil	
12875	857	Loc. Timisoara, Str. Rusu Sirlanu, Nr. 42	
CF Colectiv	6438	UAT	Timisoara
Cod unit.ind(KU)	-	CF Ind.	-

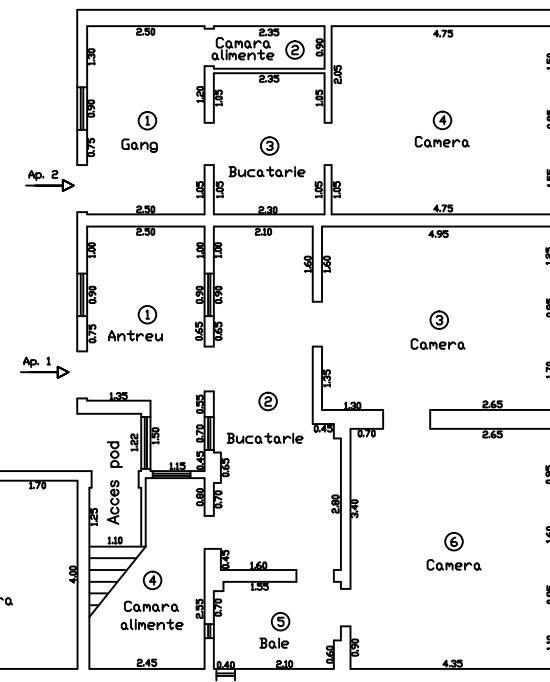
RELEVU MAGAZII CORP 2  
Scara 1:100



RELEVU SUBSOL CORP 1  
Scara 1:100



RELEVU APARTAMENTE CORP 1  
Scara 1:100



Nr. Incapere	Denumire Incapere	S. utila (m)
CORP 1		
Apartament 1		
1	Antreu	10.97
2	Bucatarie	16.98
3	Camera 1	19.30
4	Camera alimente	8.18
5	Baie	4.87
6	Camera 2	22.18
7	Boxa 2	9.89
Suprafata utila = 92.37 mp		
Apartament 2		
1	Gang	10.00
2	Camera alimente	2.11
3	Bucatarie	7.05
4	Camera	19.00
Suprafata utila = 38.16 mp		
Apartament 3		
1	Bucatarie	7.16
2	Camera alimente	2.28
3	Camera	15.48
Suprafata utila = 24.92 mp		
Apartament 4		
1	Camera 1	18.40
2	Bucatarie	7.12
3	Camera alimente	1.85
4	Boxa 3	2.30
Suprafata utila = 29.67 mp		
Apartament 5		
1	Bucatarie	8.40
2	Camera alimente	2.66
3	Camera	16.00
4	Boxa 1	9.05
Suprafata utila = 36.11 mp		
Apartament 6		
1	Camera	16.93
2	Camera alimente	4.39
3	Antreu	4.30
4	Bucatarie	12.37
5	Boxa 4	5.07
Suprafata utila = 43.06 mp		
Suprafata totala utila corp 1 = 264.29 mp		
CORP 2		
Magazie nr. 1		
1	Magazie	5.79
Suprafata utila = 5.79 mp		
Magazie nr. 2		
1	Magazie	15.95
Suprafata utila = 15.95 mp		
Suprafata totala utila corp 2 = 21.74 mp		
Suprafata totala utila imobil = 286.03 mp		
Executant		Data
Ing. Moroz Remus Mihai		19.01.2010
Receptionat		Data

